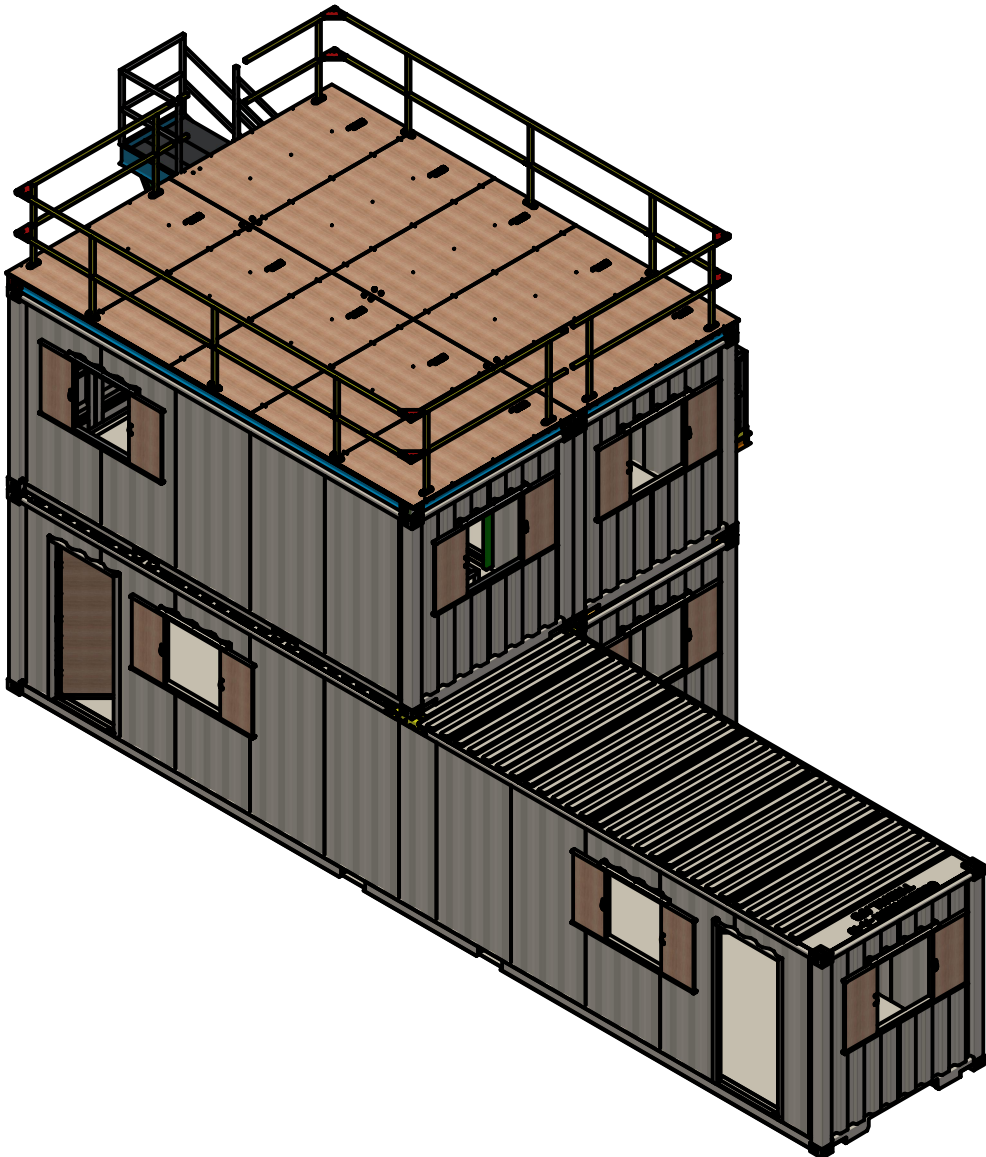
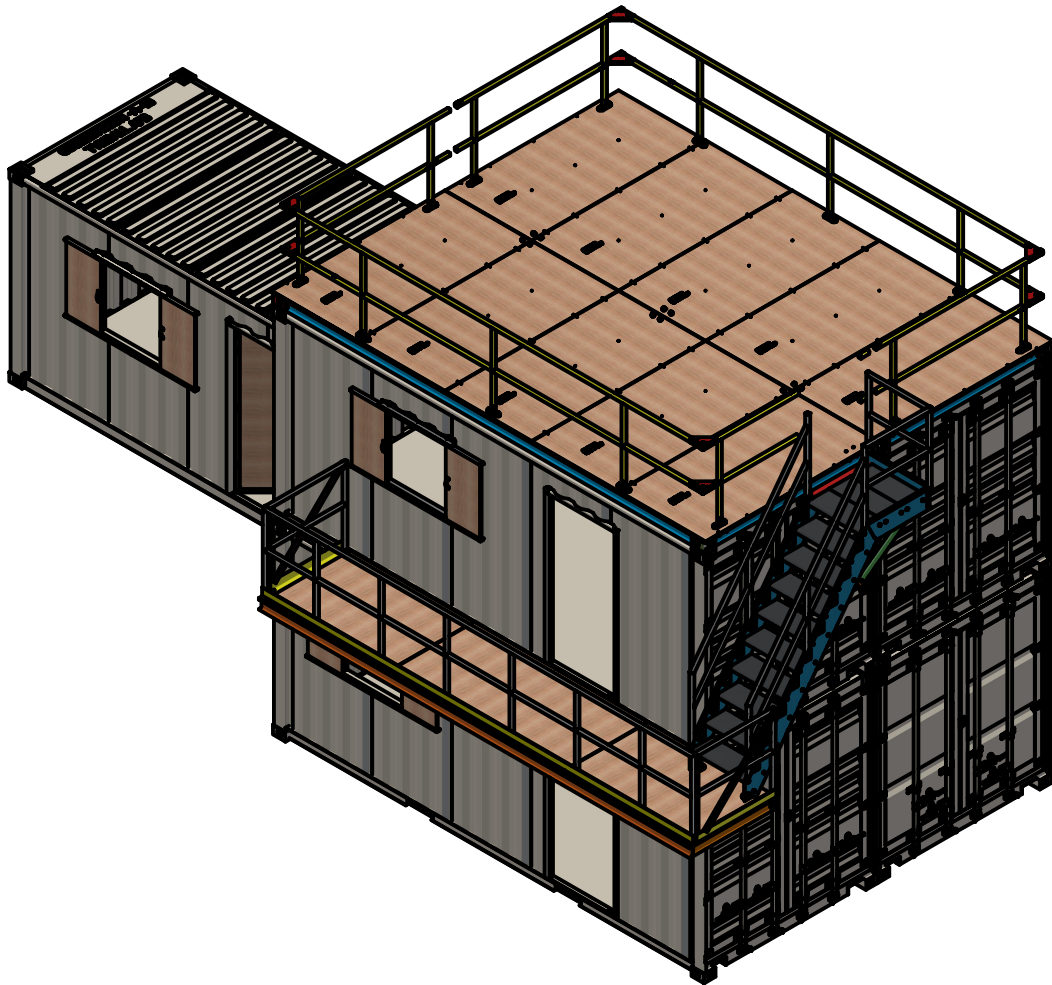


BUILDING XXXXX



FOR MORE DETAIL SEE SEPERATE **INSTALL DRAWINGS** FOR EACH ITEM

The customer is responsible to check drawings and test design. **Folkman Inc** accepts no responsibility, liability, or warranty of fitness for the usage of these products. **Folkman Inc** only warranty for these products shall be stated in **Folkman Inc** terms and conditions.

PRIMER SPECIFICATIONS

MINIMUM SURFACE PREP - SSPC-SP-2  
PRIME TO - SSPC-PA-1  
**COATING SUPPLIER** - SHERWIN WILLIAMS  
**COATING NUMBER** - KEM-AQUA 70P  
**COATING COLOR** - E61 W 573 RAL-1001 BIEGE

TOP COAT SPECIFICATIONS

MINIMUM SURFACE PREP - SSPC-SP-2  
PRIME TO - SSPC-PA-1  
**COATING SUPPLIER** - SHERWIN WILLIAMS  
**COATING NUMBER** - PRO INDUSTRIAL SEMI-GLOSS  
**COATING COLOR** - B66-1550 RAL 1015 LIGHT IVORY

<div><div><b>Folkman</b><div>Inc</div></div><div>"TURNING IDEAS INTO SOLUTIONS"</div><div>"Service- Disabled    Veteran- Owned Small Business"</div><div>1520 Cornell Rd. Green Bay, WI 54313</div><div>Ph (920) 544-9996    Fax (920)544-9918</div><div>www.folkmaninc.com</div><div><small>The customer is responsible to check drawings and test design. Folkman Inc accepts no responsibility, liability, or warranty of fitness for the usage of these products. Folkman Inc only warranty for these products shall be as stated in Folkman Inc terms and conditions.</small></div></div>	Project:	CATWALK OBSERVATION BUILDING	Date:	12-15-21
	Client:		Drawn By:	JAF
	General Contractor:		Scale:	
	Job/PO Number:		Weight:	
	Drawing Number:		Sheet Number:	1      OF      1